

Item	Specifications
Print Head	Piezo-electric drop-on demand
Resolution	600dpi×600dpi, 1,200dpi×1,200dpi, 1,200dpi×2,400dpi
Ink	Exclusive UV curable ink (7 colors:Y,M,C,K,Lm,Lc,W) + Clear 440cc/cartridge for each color
Max. Printing Width	Width : 600mm (23.6") Feed Direction : 500mm (19.68")
Distance Accuracy	Absolute accuracy : Whichever is the larger one of ±0.3mm or ±0.3% of designated distance Repeatability : Whichever the larger one of ±0.2mm or ±0.1% of designated distance
Perpendicularity	±0.5mm/500mm
Waste Ink Tank	Bottle type (2 liters) with sensor
Max. Media Size	Size : 700mm(27.5")×600mm(23.6") Thickness : 50mm(1.96") Weight : 10kg (22 lbs)
Media Set Device	Flatbed with vacuum table
UV Device	Equipped with UV lamp
Interface	IEEE1394/IEEE1284
Applicable standard	VCCI class A, CE Marking, CB Report, UL, RoHS Directive
Power Requirement	Printer main unit·UV Device : Single-Phase 200V~240V
Power Consumption	4.0kVA less than (Main unit 0.5kVA, UV Device 1.8kVA, Heater 1kVA, blower 0.7 kVA)
Operational Environment	Temperature : 15 ~ 30℃ (59 ~ 86°F) Humidity : 35 ~ 65% Rh Accuracy guarantee temperature : 18 ~ 25℃ (64 ~ 77°F) Temperature gradient : less than ±10℃/h (18°F) Dust : Equivalent to normal office level
Weight	420kg (926 lbs) less than (incl. UV power supply)
Outside Dimensions (W×D×H)	2,440mm(96")×1,570mm(61.9")×1,370mm(54") less than (incl. UV power supply)
Exclusive RIP included as standard, compatible with EPS, PS, TIFF, JPEG and BMP file formats	

\*Indicated values show the degree of mechanical precision.  
At the time of shipment, adjustments are made to optimize visual quality.

Supply items

Product name	Color	Product No.	Remarks
Exclusive UV ink	Cyan	SPC-0371C	1 cartridge: 440 cc (effective volume: 400 cc)
	Magenta	SPC-0371M	
	Yellow	SPC-0404HY	
	Black	SPC-0371K-2	
	Light cyan	SPC-0371Lc	
	Light magenta	SPC-0371Lm	
Clear liquid	White	SPC-0371W-3	
	Clear	SPC-0371CL	

Matters to note regarding media and ink

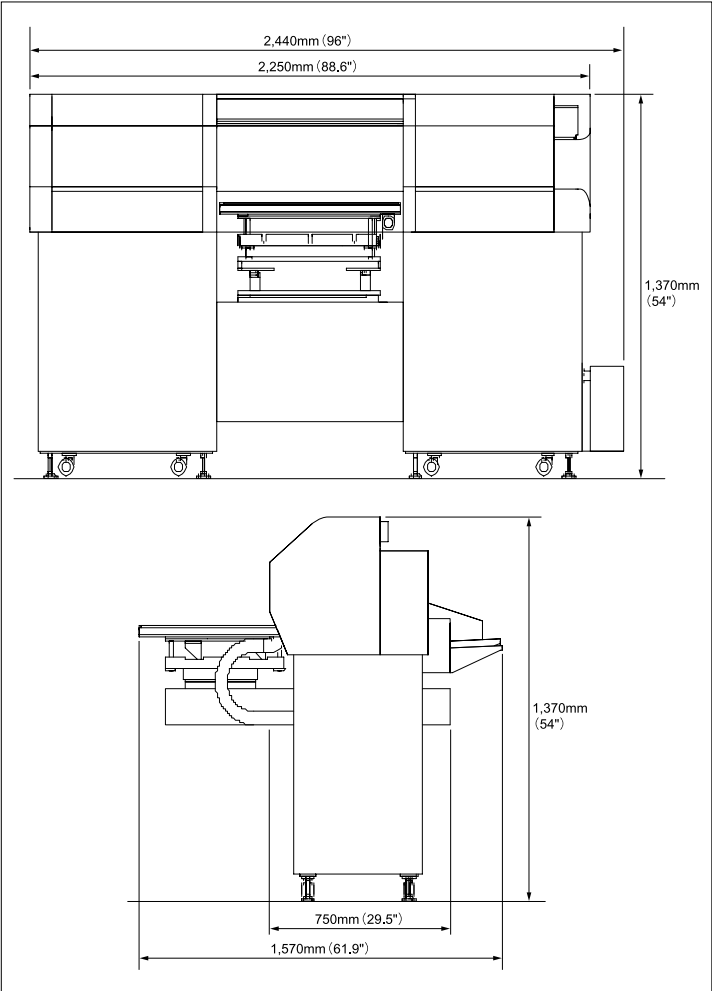
- Ink performance of materials
- Post-printing ink property performance (adhesion, weather durability, etc.) varies according to the material.
- If printing materials other than those described are to be used, please test the materials first.
- Adhesion performance differs according to the material. Thus, there are cases in which optimization of ink and anchor coat/overcoat is necessary.

- UV lamp
- A characteristic of UV lamps is that their illuminance deteriorates over time. The illuminance declines by about 30% after about 1,000 hours of use.

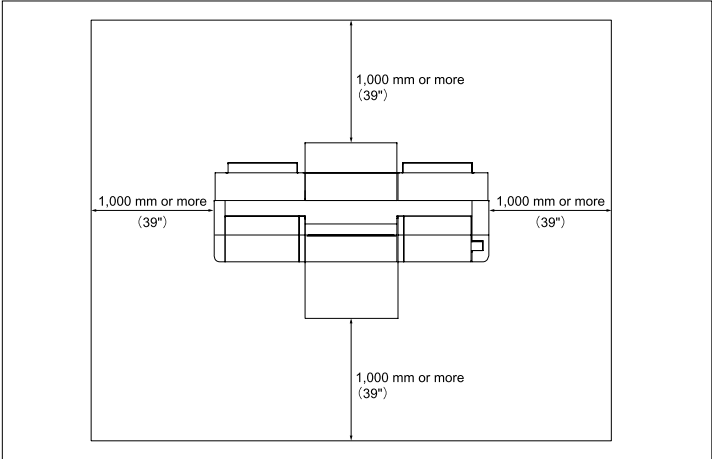
Note: Although using a UV lamp after 1,000 hours is possible, illuminance gradually decreases. Frequent curing and illuminance checks are therefore recommended.

- All trademarks or registered trademarks are the property of their respective owners.
- Specifications are subject to change without notice.
- Some of the screens and printing samples in this catalog are artificial renderings.
- Inkjet printers print using extremely fine dots, so colors may very slightly differ following replacement of the printing heads. Also note that if using multiple printer units, colors may slightly differ among the units due to slight individual differences among the units.

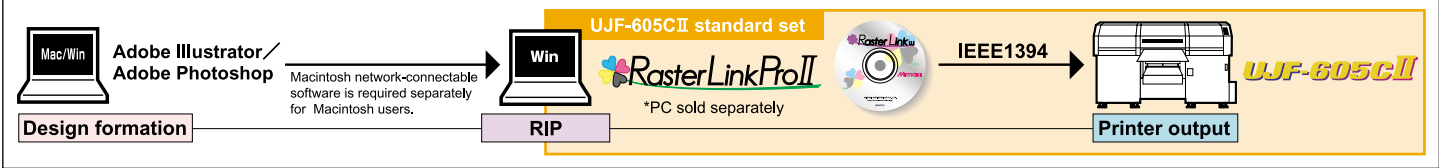
External dimensions



Installation space



System configuration



MIMAKI ENGINEERING CO., LTD.

TKB Gotenyama Bldg. 5-9-41 Kitashinagawa Shinagawa,  
Tokyo 141-0001, Japan Tel: +81-3-5420-8671  
trading@mimaki.co.jp www.mimaki.co.jp

MIMAKI USA, INC.

140 Satellite Boulevard NE, Suwanee, Georgia 30024-7128  
Atlanta +1-888-530-3988 Boston +1-888-530-3986  
Los Angeles +1-888-530-3987 Chicago +1-888-530-3985  
www.mimakiusa.com

MIMAKI EUROPE B.V.

Joan Muyskenweg 42-44, 1099CK  
Amsterdam, The Netherlands  
Tel: +31-20-4627-640



Increased Production Capacity.  
High-Speed Direct Printing on Specialty Media.

UV curable Inkjet Printer with 6 Colors + White and Clear

UJF-605CII



FLEXIBLE FLATBED



Equipped with new high-speed print heads that enable printing up to twice as fast as the previous model\*.  
Digital flatbed that can meet demands for quick turnaround times.

\*In the case of specific resolutions when compared to our conventional model



The UJF-605C enables direct digital printing on three-dimensional and other special materials.  
The inkjet printer is ideal for a wide range of printing jobs, from sample creation to full-scale production.


Equipped with new, high-speed print heads	New head type was adopted to achieve high speed printing. This allowed print speeds up to double that of the conventional type.	Inkjet method	A non-contact method makes highly precise direct printing possible on three-dimensional curved surfaces for a remarkable design improvement.
Clear liquid	Gives a high-gloss finish for innovative design options, increases color-fastness and protects the printed surface.	Flatbed design	Because materials can be individually arranged, print positioning can be imposed with high precision. This also enables simultaneous printing on multiple materials.
UV-curable ink	The use of this ink greatly increases the choice of materials for printing. Direct printing is possible on PET, PP, polycarbonate and ABS resin.	VOC countermeasure	This printer uses UV-curable ink free of volatile organic chemicals (VOCs).
White + CMYK Lc Lm	Highly opaque white ink is used as backing print on transparent or colored substrates, thus realizing full-color reproduction of impressive, beautiful images.	Ozone-free configuration	The printer's UV lamp does not generate any ozone.
1,200 x 2,400 dpi	Original and precise designs not previously possible can be obtained, and the product comes sparkling with a high-quality finish.	Registration mark detection	By detecting one register mark inside the print area, the print origin is adjusted automatically.

RIP software maximizes the potential of the UJF-605CII.

# RasterLinkProII

- Preview screen allows precise adjustment of designs, etc., while viewing a print image.
- Adobe Illustrator and Photoshop files can be printed (EPS, PS, TIFF, JPEG and BMP).
- White color printing is easy to configure.
- Only simple adjustments are required to convert color data to white-color data with the RIP.
- Layouts for many and varied kinds of data can be arranged easily with the RIP.
- A variety of editing functions are available, including enlargement, reduction, mirroring, rotation and duplication.

“Raster Link Pro II” is a software RIP that optimizes the performance of the UJF-605CII. It not only features detailed configuration options that can satisfy high-level professional needs, but it also provides easy usability enabling a beginner to quickly put the UJF-605CII to good use.



Configuration of Raster Link Pro II

- PostScript3-compatible software RIP for Mimaki UJ Series
- Software configuration

Raster Link Pro II: Software RIP  
Profile Manager: Profile management software  
Color Replace Tool: Color replacement software  
Profile CD → Necessary profiles are included.

Desired performance and productivity. New business opportunities unfold with the UJF-605CII.

## Productivity

High productivity printing on small items.

Because production is possible on a made-to-order basis thanks to the on-demand capability of the printer, printing requirements can be met the same day, for instance. Setting up a jig and arranging items to be printed on the table, mass production can be achieved speedily. As this shows, the UJF-605CII is remarkably productive for printing on small items.

### Example 01 Various types of cards



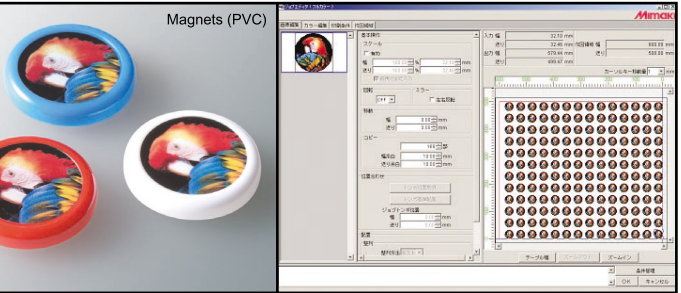
Suitable for variable printing in which data is different for each item in terms of numbers and photos.

Printing time: 11 min., 12 sec.  
Size: 86 mm x 54 mm, 1,200 x 1,200 dpi, 16 pass Hi-mode  
Width 600 mm x feed direction 500 mm, with 45 sheets imposed.

It is possible to print 240 sheets per hour!

\*RIP configuration and preparation time is not included.

### Example 02 Magnets



Total printing time (White printing+Color printing): 22 min., 24 sec.  
Size: 29 mm dia., 1,200 x 1,200 dpi, 16 pass Hi-mode  
Width 600 mm x feeding direction 500 mm, with 168 units imposed.

It is possible to produce 450 units per hour!

\*RIP configuration and preparation time is not included.

## Performance

Making photographs and gradations more beautiful.

With such a high resolution as 1,200 x 2,400 dpi, fine lettering and lines, as well as extremely accurate images, are faithfully reproduced. Six colors — CMYKLcLm — along with white, enable variable color density to be expressed vividly with high visual quality. Photographic details and the gradations of illustrations are truly beautiful due to the nature of this inkjet printer.



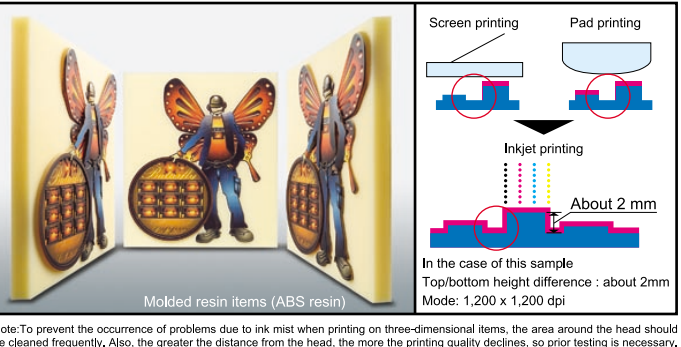
Printing done on materials up to 50 mm in thickness.

Print media conveyance uses a flatbed design. It is possible to directly print on a thick material on the table. Printing is possible not only on pre-molding materials but also on finished products. This ability to apply original designs greatly adds value to products.



Direct printing also possible on curved three-dimensional surfaces.

Inkjet printing is a non-contact printing method. Since materials to be printed, such as plates or blankets, are not in contact with the print head, highly precise and beautiful printing is possible even on uneven surfaces of shaped objects. Photographs and illustrations can therefore be vividly expressive.



Note: To prevent the occurrence of problems due to ink mist when printing on three-dimensional items, the area around the head should be cleaned frequently. Also, the greater the distance from the head, the more the printing quality declines, so prior testing is necessary.